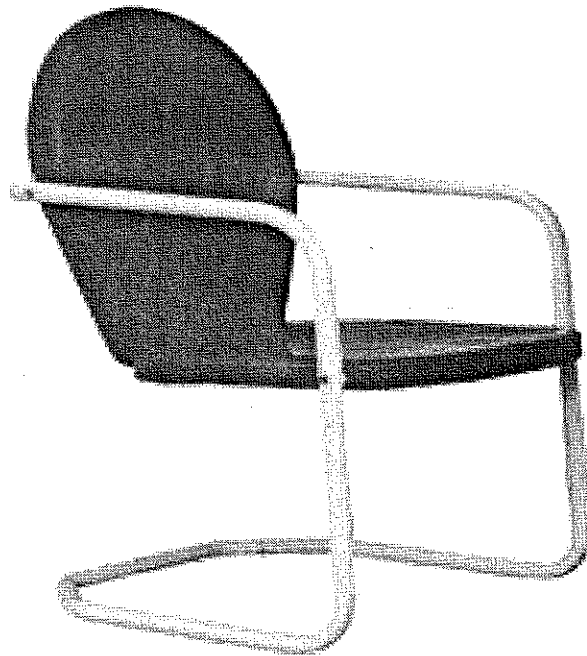


# Single Chair Assembly Instructions



Please **CAREFULLY** read, understand and follow **ALL** the steps in these Assembly Instructions **AND Complete Each Step Before Moving On To The Next.**

Working on a clean padded surface or a lawn is recommended. **Avoid concrete as your assembly area.**

PLEASE READ THESE INSTRUCTIONS COMPLETELY BEFORE STARTING ASSEMBLY:

Please separate and identify all parts making sure that you have all of the listed parts. Should you experience any difficulty during assembly or if any parts are missing or damaged, please contact the service center and provide the following information:

1-Model number of product

2-Part number and material code of the part from the parts lists shown on assembly instructions

3-Name of retailer and sales receipt

Most problems can be resolved without returning this product to retailer

### CAUTION

For optimum safety, use on even surface only

Please ensure all bolts are properly tightened before use

Improper use of this product or failure to use as directed can result in injury

Do not clean using abrasives or any substances containing abrasives as these may scratch the frame

Do not discard any of the packaging until you have checked that you have all the parts and the pack of fittings

Keep children away during assembly. This item contains small parts which can be swallowed by children. Children should always be under direct adult supervision while using the product

Retain the assembly instructions for future reference

### SERVICE CENTER TOLL FREE NUMBER

Tel: 1-800-444-4909

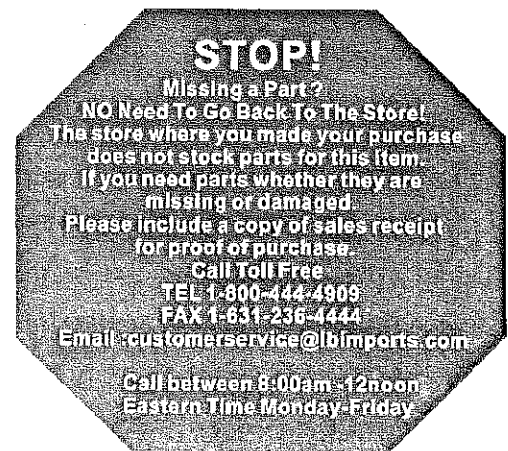
Fax: 1-631-236-4444

Please fax, mail, or email a copy of store receipt, model # & part # needed with a daytime telephone number and address to:

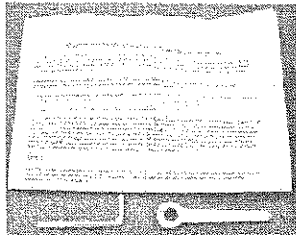
150 Engineers Road, Hauppauge, NY 11788

Fax: (631)236-4444

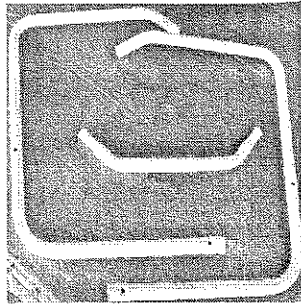
email: [customerservice@lbimports.com](mailto:customerservice@lbimports.com)



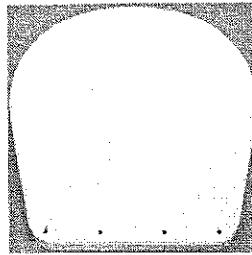
## Single Chair Part List



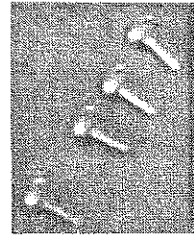
1 set of instructions



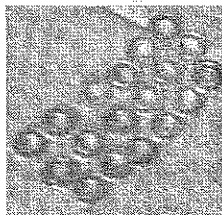
2 chair legs  
1 crossmember



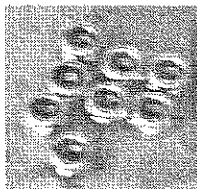
Chair Back



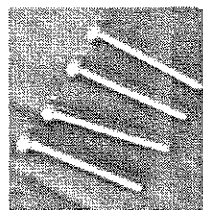
4 short bolts



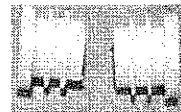
16 washers



8 lock nuts



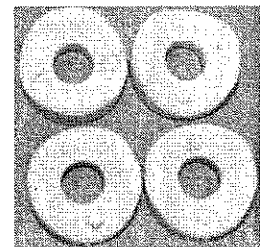
4 long bolts



2 end caps



Chair Seat



4 plastic spacers

### Step 1.

Assemble Chair Seat and Back by placing **washer** on **short bolt** and ensure bolt enters from **rear of chair back**, place **another washer** on **short bolt** then fully tighten with **lock nut**. Set aside.

Note: Thunderbird style chair will only use 3 short bolts, washers and lock nuts.

### Step 2.

Locate 2 **chair legs** and 1 **crossmember**. Put plastic **end cap** into each leg. Place **crossmember** into curved end of each leg.

### Step 3.

Attach the seat/back to the arms. Starting with the back, place **washer** on **long bolt** and align with mounting hole of **chair back**. Push bolt through hole placing **plastic spacer** between frame and chair back. Fully push **long bolt** through and secure with **washer** and **lock nut**. **DO NOT FULLY TIGHTEN**. Do the same on the other side and for the **chair seat**. Once you get to the last **long bolt** on the seat, it is normal to have quite a distance between the frame and the seat. This tension is what keeps the **crossmember** in place. Ensure that **crossmember** has not pulled away from frame, then **TIGHTEN ALL BOLTS AND NUTS**. **DO NOT OVER TIGHTEN**