

SANTA WITH SLEIGH

Indoor Use Only

Thank you for purchasing this product. Please read the instructions and warnings carefully before use to ensure safe and satisfactory operation.

INSTRUCTIONS FOR USE

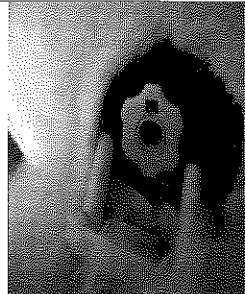
- Carefully remove from packaging taking care not to damage or twist the wires
- Place item on a flat stable surface
- Make sure that the cable is completely unravelled and that there are no snags in the cable.
- To operate, plug the transformer into mains supply, indoors. The on/off switch is located near the jack plug socket

NOTE: YOUR FIGURE MAY BE DIFFERENT OR HAVE A DIFFERENT CLOTHE THAN THE ONE SHOWN FOR DEMONSTRATION.

ASSEMBLY

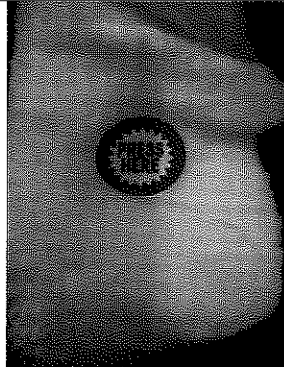
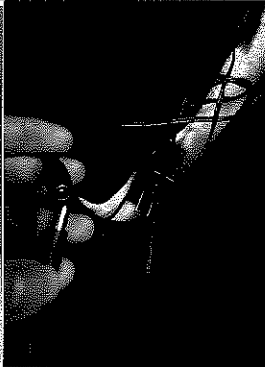
1. Carefully remove the Packaging, take out the product. because the product is very heavy, don't forcefully pull the body, avoided will damage its spare parts

2. Place item on a flat stable surface, Carefully assembled the sleigh, To attach head, line up tabs with slots on neck handle.....rotate the head until the face is looking straight ahead.



3. This product is supplied with a DC 9V 5W transformer and should only be used with this transformer. connect to power adapter and product, insert the plug, switch on the power.

4. Straighten costume, the on/off switch is located near The left hand cuff for red mark. Flip the switch on, enjoy your new Christmas Greeter!



IMPORTANT:

This is not for a toy ,only for decoration !