

Lighted Buck

Assembly Instructions

CAUTION: Please read the complete assembly directions first. This item is compactly packed and requires light assembly. The assembly is actually quite simple and should require no more than 10 minutes. The parts are packed in a specific way and the light wires are all pre-attached to the metal frame. However, if unpacked and assembled incorrectly or forcefully, the lights can become tangled or damaged and frame parts broken. Because of this, reading all the instructions first, care, and a bit of patience needs to be exercised during the assembly.

STEP 1 - Orientation and Preparation

Remove deer from box, place in or on an open work area and identify the top, bottom, front and back. The front has the arched opening. The peak of the arch is the top and front. The rear has the football shaped tail on the top side.

Caution:

1. Do not plug when you assemble product.
2. before start to assemble the product should check the bulbs, if is broken, must to change and replace the provided bulbs immediately
3. please do not modify any part of the product (light string.....etc)

STEP 2 - Loosening the parts

Remove the black twist ties from the frame. Set aside for future use in step 6.

STEP 3 - Laying out parts

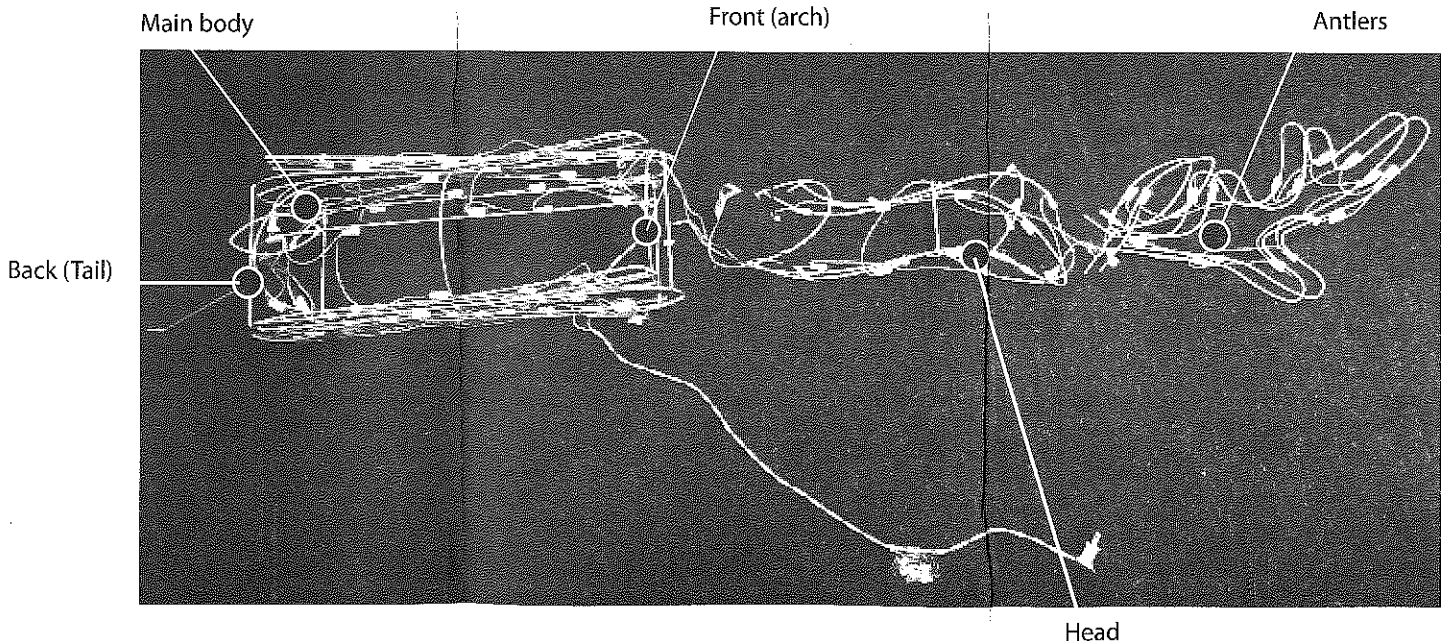
Carefully remove deer head assembly from inside the body by sliding it out through the rectangular opening in the bottom of the body. Gently swing the head forward to the front of the deer body, head pointing forward. The antler wires will also be attached to the head assembly.

They should be placed further out in front of the head assembly. The head and antler assemblies will be attached and secured to the body in steps 7.

STEP 4 - Rotating leg pairs into position

Locate the leg pairs which are folded against the sides of the body. The front legs are the outermost pair and are folded pointing backwards. The left and right front legs should be simultaneously grabbed at the "feet" end at the back end of the body, carefully pulled away from the body around 1" so they clear the wires of the folded rear legs. Now rotate upwards and forward towards the front of the body continuing all the way around in a circle until they are facing the ground. Repeat this procedure to unfold the back legs. Grab the feet located at the front end of the deer, pulling them away from the body about 1" to clear lights and wires, and rotate upwards and back towards the rear of the body all the way around in a circle until they are also now facing the ground.

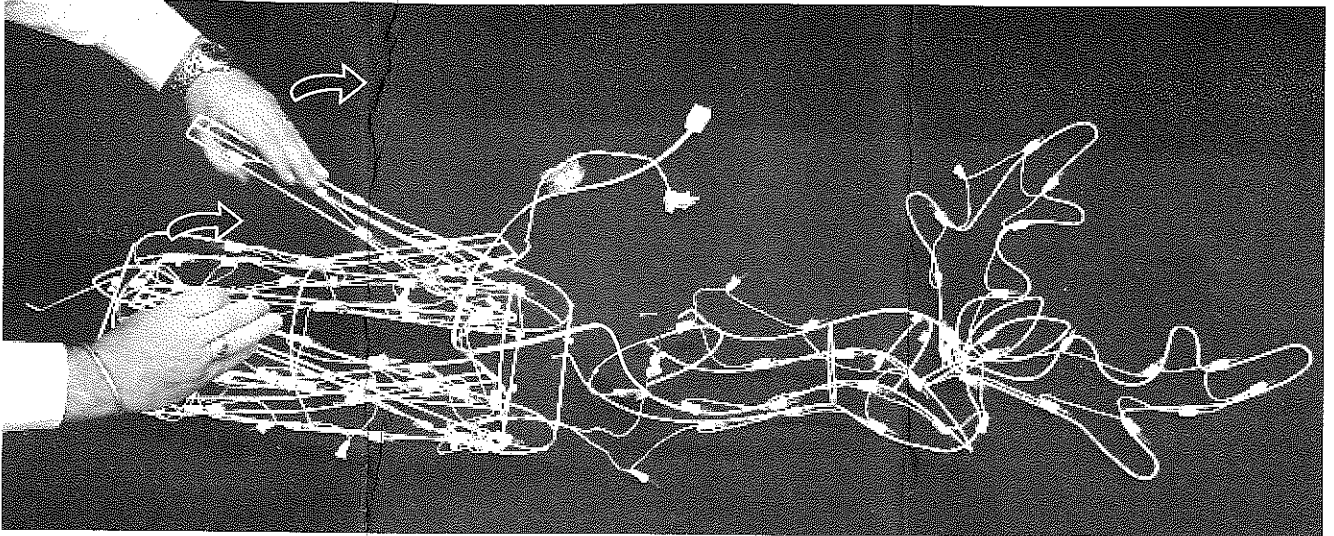
STEP 3



Lighted Buck Assembly Instructions

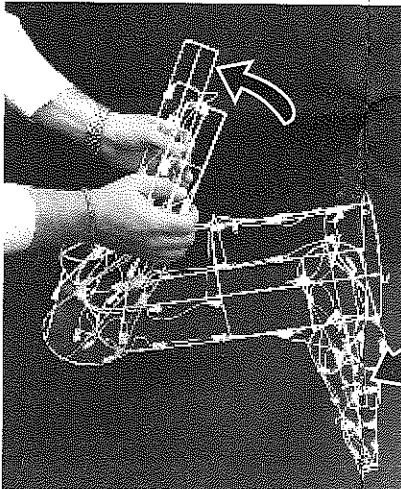
STEP 4- Front legs

Rotate front legs together up and forward then down and under the body



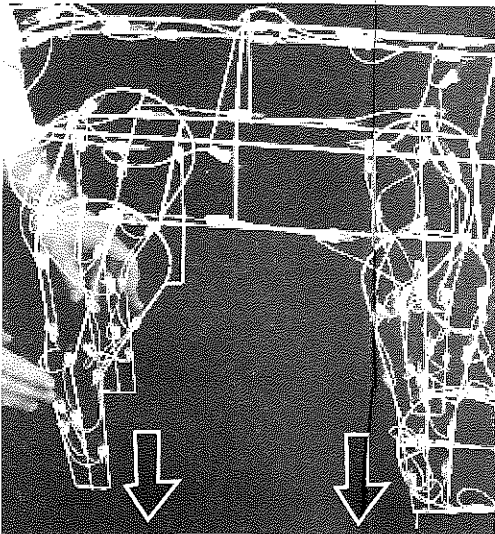
STEP 4 -Back legs

Rotate back legs together up and backwards then down and under the body.



Front Legs
in position

STEP 4 -Both legs in position

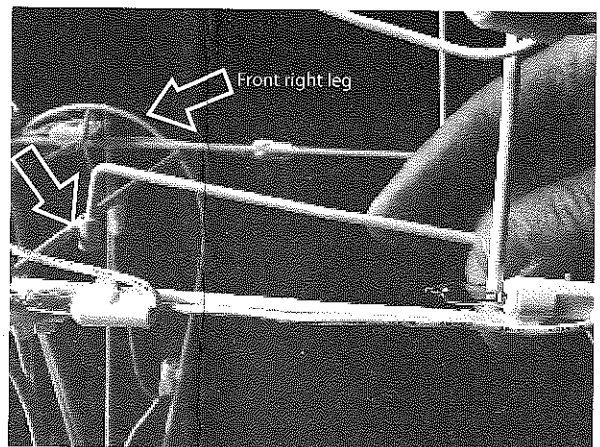


Rotate legs together
to point at the ground

STEP 5 - Locking deer into standing position

Secure the leg lock latch located on the rear legs crossbar, hooking into the round receptacle located on the front legs crossbar. The legs will now be in the proper position and the deer will stand.

STEP 5 - Secure Leg lock latch



Secure the leg lock latch in place

STEP 6 - (Optional) Securing Legs to body

Secure each leg to the body with the secure ties for extra strength and support

Lighted Buck Assembly Instructions

STEP 7 - Inserting antlers

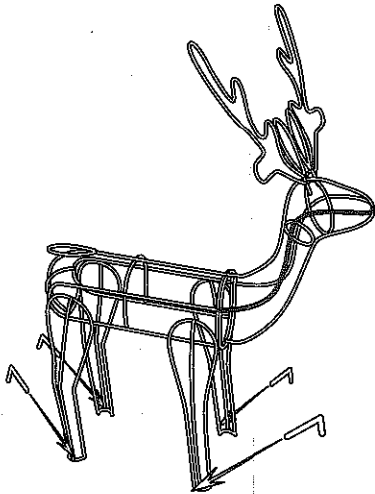
Join antler halves together (A&B). Insert the antler assembly into the two round holes on the top of the deer's head.

STEP 8 - Attaching loose wires to frame

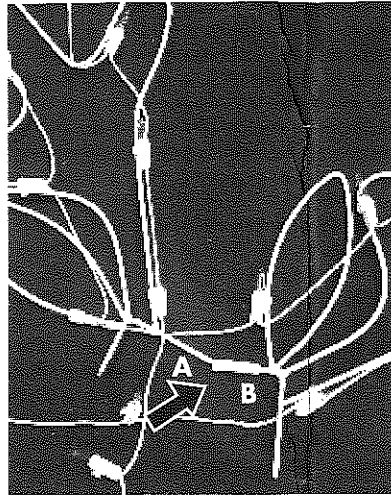
Re-secure and re-position any loose wires to the logical areas on the frame of the deer and it should be ready to plug in.

STEP 9 - Secure to ground

Secure each leg to the ground with provided ground stakes.

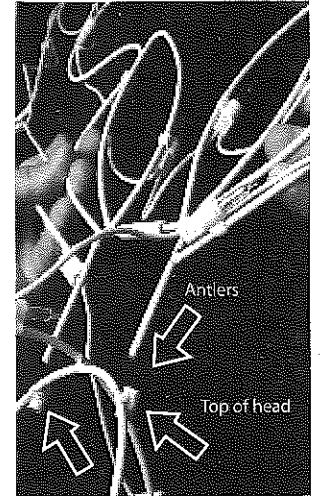


STEP 7 Assemble antlers



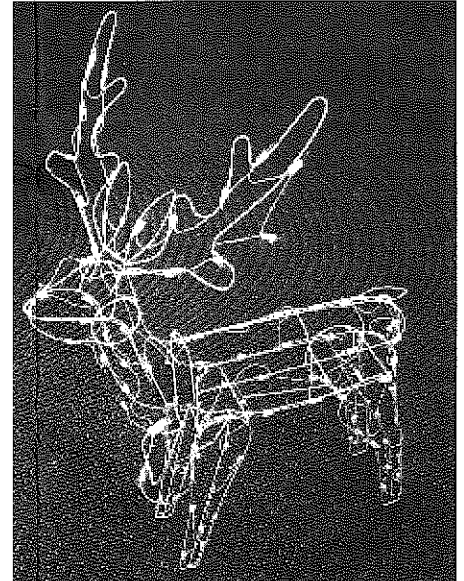
Join antler halves together. Push A into receptacle B

STEP 7 Insert antlers into head



Attach antlers to head at 2 points as shown.

Finished



Buck should look like this when fully assembled

THIS PRODUCT MUST BE USED WITH GROUND STAKES

IMPORTANT SAFETY INSTRUCTIONS

When using electrical products, basic precautions should always be followed including the following;

a) READ AND FOLLOW ALL SAFETY INSTRUCTIONS.

- b) Do not use seasonal products outdoors unless marked suitable for indoor and outdoor use. When products are used in outdoor applications, connect the product to a Ground Fault Circuit Interrupting(GFCI)outlet. If one is not provided, contact a qualified electrician for proper installation.
- c) This seasonal use product is not intended for permanent installation or use.
- d) Do not mount or place near gas or electric heaters, fireplace, candles or other similar sources of heat.
- e) Do not secure the wiring of the product with staples or nails, or place on sharp hooks or nails.
- f) Do not let lamps rest on the supply cord or on any wire.
- g) Unplug the product when leaving the house, when retiring for the night, or if left unattended.
- h) This is an electric product-not a toy! To avoid risk of fire, burns, personal injury and electric shock it should not be played with or placed where small children can reach it.
- i) Do not use this product for other than its intended use.
- j) Do not hang ornaments or other objects from cord, wire, or light string.
- k) Do not close doors or windows on the product or extension cords as this may damage the wire insulation.
- l) Do not cover the product with cloth, paper or any material not part of the product when in use.
- m) This product is equipped with push-in type lamps. Do not twist lamps.
- n) This product employs overload protection (fuse). A blown fuse indicates an overload or short-circuit situation. If the fuse blows, unplug the product from the outlet. Also unplug any additional strings or products that may be attached to the product. Replace the fuse as per the user servicing instructions(follow product marking for proper fuse rating)and check the product. If the replacement fuse blows, a short-circuit may be present and the product should be discarded.
- o) Read and follow all instructions that are on the product or provided with the product.

p) SAVE THESE INSTRUCTIONS

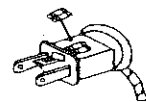
Use and care Instructions

- a) When the product is placed on a live tree, the tree should be well maintained and fresh. Do not place on live trees in which the needles are brown or break off easily, Keep the tree holder filled with water.
- b) If the product is placed on a tree, the tree should be well secured and stable.
- c) Before using or reusing, inspect product carefully. Discard any products that have cut, damaged, or frayed wire insulation or cords, cracks in the lampholders or enclosures; loose connections, or exposed copper wire.
- d) When storing the product, carefully remove the product from wherever it is placed, including tree, branches, or bushes, to avoid any undue strain or stress on the product conductors, connections, and wires.
- e) When not in use, store neatly in a cool, dry location protected from sunlight.

User Servicing Instructions

Replace the fuse.

- a) Grasp plug and remove from the receptacle or other outlet device. Do not unplug by pulling on cord.
- b) Open fuse cover. Slide open fuse access cover on top of attachment plug towards blades.
- c) Remove fuse carefully.
- d) Risk of fire. Replace fuse only with 3 Amp, 125 Volt fuse(provided with product).
- e) Close fuse cover. Slide closed the fuse access cover on top of attachment plug.
- f) Risk of fire. Do not replace attachment plug. Contains a safety device(fuse)that should not be removed. Discard product if the attachment plug is damaged.



Replace the lamp.

Step 1:Grasp plug and remove from the receptacle or other outlet device. Do not unplug by pulling on cord.

Step 2:Pull lamp and plastic base straight out of lampholder.



Step 3:Replace lamp with only 3.5 Volt, 0.42 watt super bright type lamp (provided with product).



If the new lamp base does not fit in lampholder or if the new lamp does not have lamp base, follow the steps below before step 3.

- a) Remove the base of burned out lamp by straightening lamp leads and gently pull lamp out.
- b) Thread leads of new lamp through holes in old base with one lead in each hole.
- c) After lamp is fully inserted into base, bend each lead up, like other lamps in the light set so that the leads will touch the contacts inside the lampholder.



CAUTION -To reduce the risk of over heating, replace burned- out lamps promptly. use 3.5 volt, 0.42 watt lamps only.

CAUTION -To reduce the risk of fire and electric shock: a) Do not install on trees having needles, leaves or branch coverings of metal or materials which look like metal, and b) Do not mount or support strings in a manner that can cut or damage wire insulation.

CAUTION -To reduce the risk, please disconnect the plug if there is any accident occurs cause the product damaged, do not attempt to repair damaged product, avoid accident and injured, please find electrician to repair the product.